



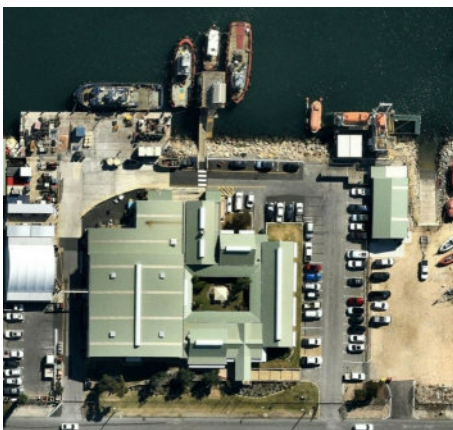
OVERVIEW

Fremantle Shorebase

The Fremantle Shorebase is located in Rous Head Harbour inside of the Fremantle Port and provides a unique facility for TAMS towage, local port maintenance and marine construction operations. With a permanent workforce covering Vessel Operations, Construction, Maintenance, Diving and a variety of Trades we can accommodate any requirements you may have in the Marine sector. TAMS has had a presence in the Harbour for 14 years and have developed close working relationships and synergies with many local subcontractors and suppliers further broadening services on offer.

Facilities

- Office
- Workshops / Warehouse
- Fabrication
- Moorings
- Heavy Load out Wharf to suit 400t crane / 100t lifts



Capability

- Unrestricted Vessel Operations
- Port Services inc C Class Tugs
- Crew Transfer Service
- Cargo Launch Service
- Utility Vessels
- Tugs
- Workboats
- Barges
- Diving Services
- Mooring Equipment and Rope Supply
- Mooring Installation
- Inspection Repair and Maintenance
 - Navigation Aids
 - Infrastructure
- Fabrication
- Marine Construction
- Dredging