



OVERVIEW

Highly versatile trailerable utility vessel. Unmatched capability in a vessel this size.

PRINCIPAL PARTICULARS

Length overall	10.70m	Proplulsion	Volvo inboard with leg 380hp
Width	3.00m	Operational fuel burn	70lt/hr@25 Kn
Aframe capacity	1.05t	Max speed	28kn
Deck winch	2t	Cargo capacity	1.60t

SURVEY

Registry	AMSA DCV	Crew	2
Class	2C Restricted	Special pax	6

OPTIONS

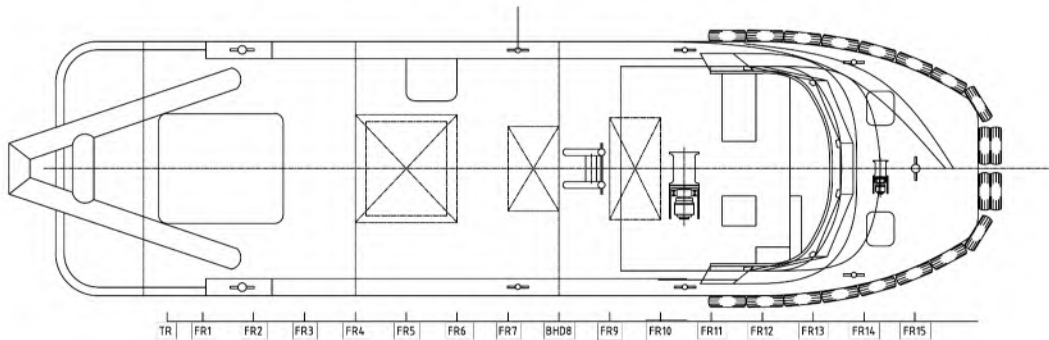
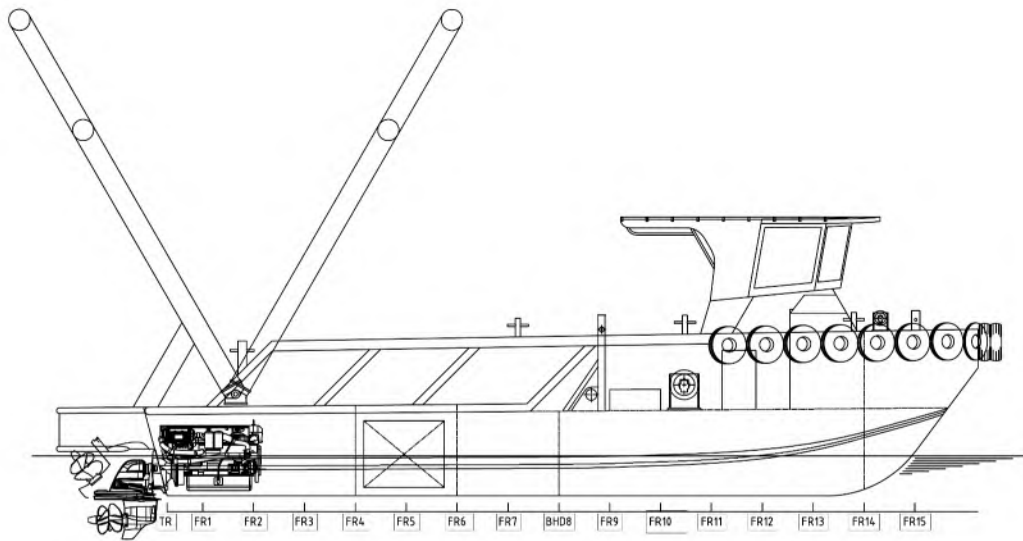
Vessel has permanent dive spread installation, Aframe, Deck winch, Hydraulic Capstan, Moonpool, twin 35cfm hydraulic driven compressors, 4000psi pressure cleaner, 80lt/min deck hydraulics, 240v Inverter and 3in1 active imaging side scan sonar. Optional capabilities to support 2 diver air enriched nitrox system. Can be fitted with Survey pole and is RTK GPS ready.

Vessel is trailered and is fully self sufficient being towed by truck which includes workshop and hiab.

AMS 1

UTILITY

GENERAL ARRANGEMENT



The data on this specification sheet has been published in good faith and should be considered for general information purposes only. It does not warrant its accuracy or completeness and to the full extent allowed by law excludes liability.