

OVERVIEW

Shallow draft dive support vessel.

PRINCIPAL PARTICULARS

Length overall	7.90m	Propulsion	2 x Yamaha 150hp
Width	4.90m	Performance	50lt/hr @ 7 Knots
Deck load	3020kg	Crane	1700kg@1.5m, 500kg@5.0m
Deckspace	13m2	Deck winch	3000kg

SURVEY

Registry	AMSA	Official / UVI##	441169
Class	2C Restricted 5Nm	Crew	2 crew, 4 pax

OPTIONS

Permanent 2 diver Enriched air nitrox spread. Large deck space with crane and deck winch.

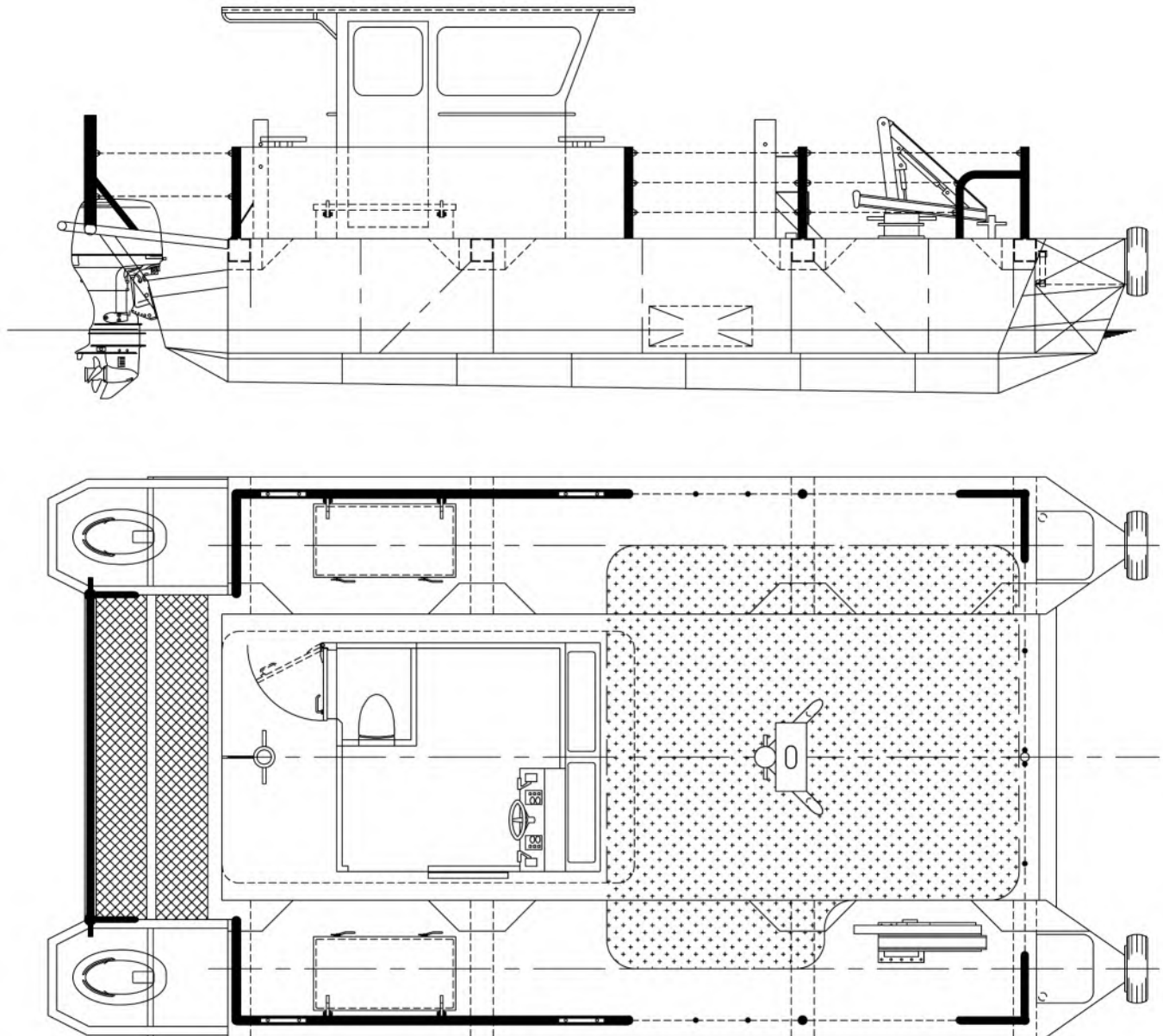
The data on this specification sheet has been published in good faith and should be considered for general information purposes only. It does not warrant its accuracy or completeness and to the full extent allowed by law excludes liability.

AMS 3

UTILITY



GENERAL ARRANGEMENT



The data on this specification sheet has been published in good faith and should be considered for general information purposes only. It does not warrant its accuracy or completeness and to the full extent allowed by law excludes liability.