

# AMS BOSS

## MULTICAT



## OVERVIEW

Shallow draft multipurpose vessel with diverse capabilities.

### PRINCIPAL PARTICULARS

<b>Length overall</b>	19.80m	<b>Operational fuel burn</b>	90lt/hr @ 5.5Kn
<b>Width</b>	8.98m	<b>Crane capacity</b>	12.29t@6.83m, 4.46t@14.83m
<b>Bollard pull</b>	8.0t	<b>Cargo capacity</b>	67t

### SURVEY

<b>Registry</b>	AMSA	<b>Call Sign</b>	VNW6270
<b>Class</b>	2B, 2C	<b>Crew</b>	3 crew
<b>Official / UVI#</b>	450054	<b>Special pax</b>	2C 7 pax

### DIMENSIONS

<b>Length measured</b>	19.80m	<b>Max draft</b>	1.88m
<b>Breadth moulded</b>	8.90m	<b>GRT</b>	93t
<b>Depth moulded</b>	2.22m	<b>Built</b>	1995
<b>Lightship draft</b>	1.43m	<b>Material</b>	Steel hull, Aluminium superstructure

# AMS BOSS

## MULTICAT



### VESSEL SPECIFICATION SHEET

#### PROPULSION

<b>Main engines</b>	2 x Cummins NT855	<b>Nozzles</b>	no
<b>Total Kw</b>	600 Kw	<b>Gearbox</b>	Twin disc 2.54:1

#### PERFORMANCE

<b>Max speed</b>	7Kn	<b>Port consumption</b>	6lt/hr
<b>Economical speed</b>	90lt/hr@5.5Kn		

#### DECK EQUIPMENT

<b>Main winch</b>	18t Hydraulic	<b>Crane accessory</b>	5t SWL running wire
<b>Roller</b>	Bow roller	<b>Clear deck space</b>	90m2
<b>Shark jaws</b>	100t SWL	<b>Deckloading</b>	2.60-6.20t/m2
<b>Crane</b>	Heila HLRM 90/5S	<b>Max cargo DWT</b>	77.75t

#### CAPACITIES

<b>Fuel</b>	120m3	<b>Fresh water</b>	90m3
<b>Fuel transfer</b>	20m3/hr	<b>FW transfer</b>	20m3/hr
<b>Fresh water</b>	90m3	<b>Sullage</b>	0.56m3

#### ACCOMMODATION

<b>Berths</b>	4	<b>Features</b>	Full Galley
<b>Cabins</b>	2	<b>Generator</b>	Isuzu 95Kw

#### NAVIGATION / COMMUNICATIONS

<b>Radar</b>	JRC JMA-2300	<b>GPS</b>	Furuno GP32
<b>Sounder</b>	JRC-FF60	<b>Chart plotter</b>	Raymarine E70013
<b>HF/Sat Phone</b>	Iridium sat phone	<b>Auto pilot</b>	TMQ AP9
<b>Call Sign</b>	VNW6270	<b>AIS</b>	Class B
<b>Compass</b>	Plastimo	<b>MMSI</b>	503481800

#### OPTIONS

Suited to a multitude of operations including Cargo transfers, Mooring operations / anchor handling, Bunkering / fuel transfers, Dive support / Platform. Low profile on waterline and fendering lends itself to barge handling.

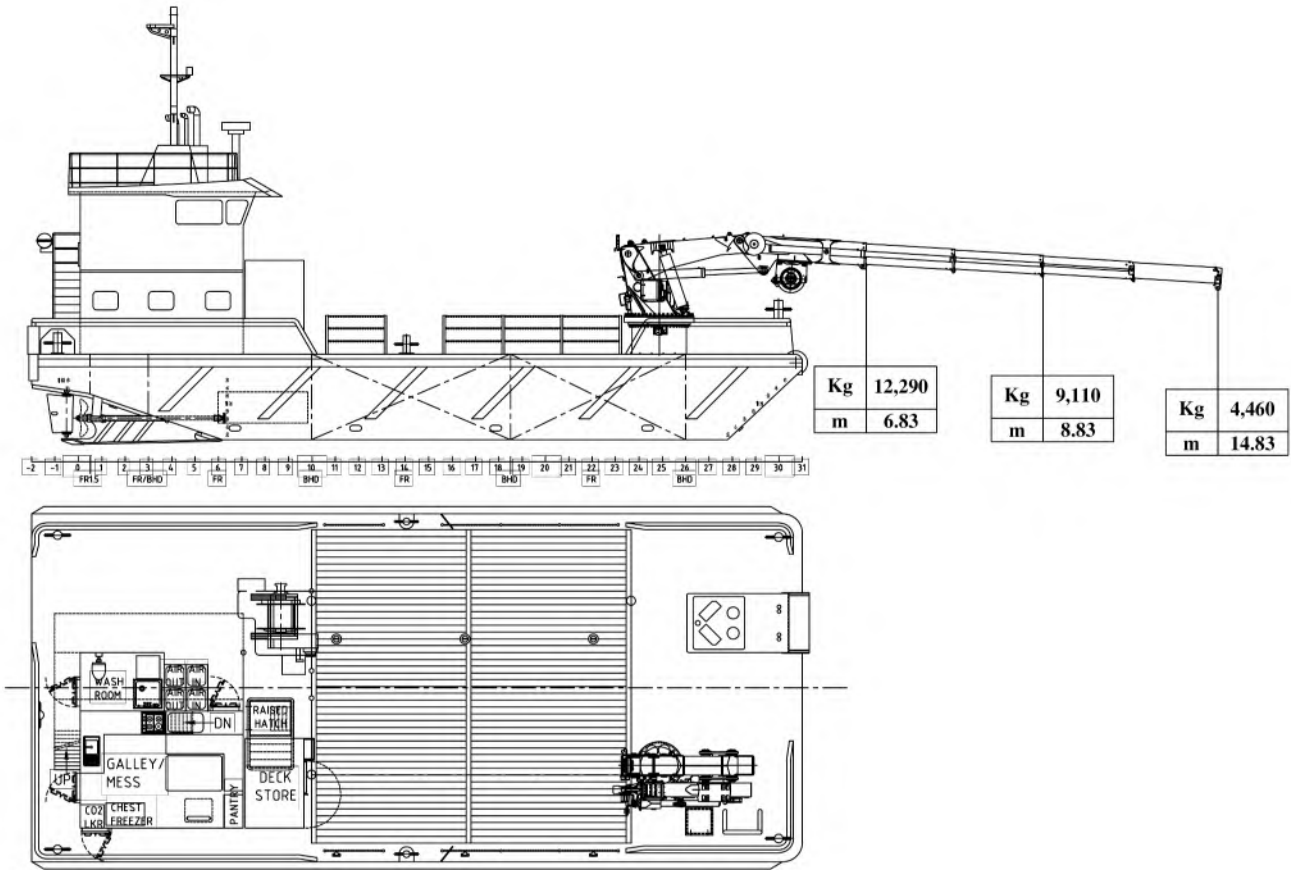


# AMS BOSS

## MULTICAT



### GENERAL ARRANGEMENT



The data on this specification sheet has been published in good faith and should be considered for general information purposes only. It does not warrant its accuracy or completeness and to the full extent allowed by law excludes liability.