



## OVERVIEW

Damen built, functional smaller multicat.

### PRINCIPAL PARTICULARS

<b>Length overall</b>	15.50m	<b>Operational fuel burn</b>	60lt/hr@6kn
<b>Width</b>	6.06m	<b>Max speed</b>	8 Kn
<b>Main engines</b>	2 x Volvo penta D9	<b>Crane capacity</b>	2.20t@8.60m
<b>Bollard pull</b>	7.88t (sustained)	<b>Cargo capacity</b>	10t

### SURVEY

<b>Registry</b>	AMSA 2C	<b>Crew</b>	2 crew, 4 pax2
-----------------	---------	-------------	----------------

### DECK EQUIPMENT

<b>Main winch</b>	15t first layer	<b>Tow hook</b>	15t SWL
<b>Main winch cont...</b>	15t warping head	<b>Crane</b>	Heila HLM 20 2S
<b>Coupling winch</b>	2 x 25t manual	<b>Clear deck space</b>	29m3 forward

### OPTIONS

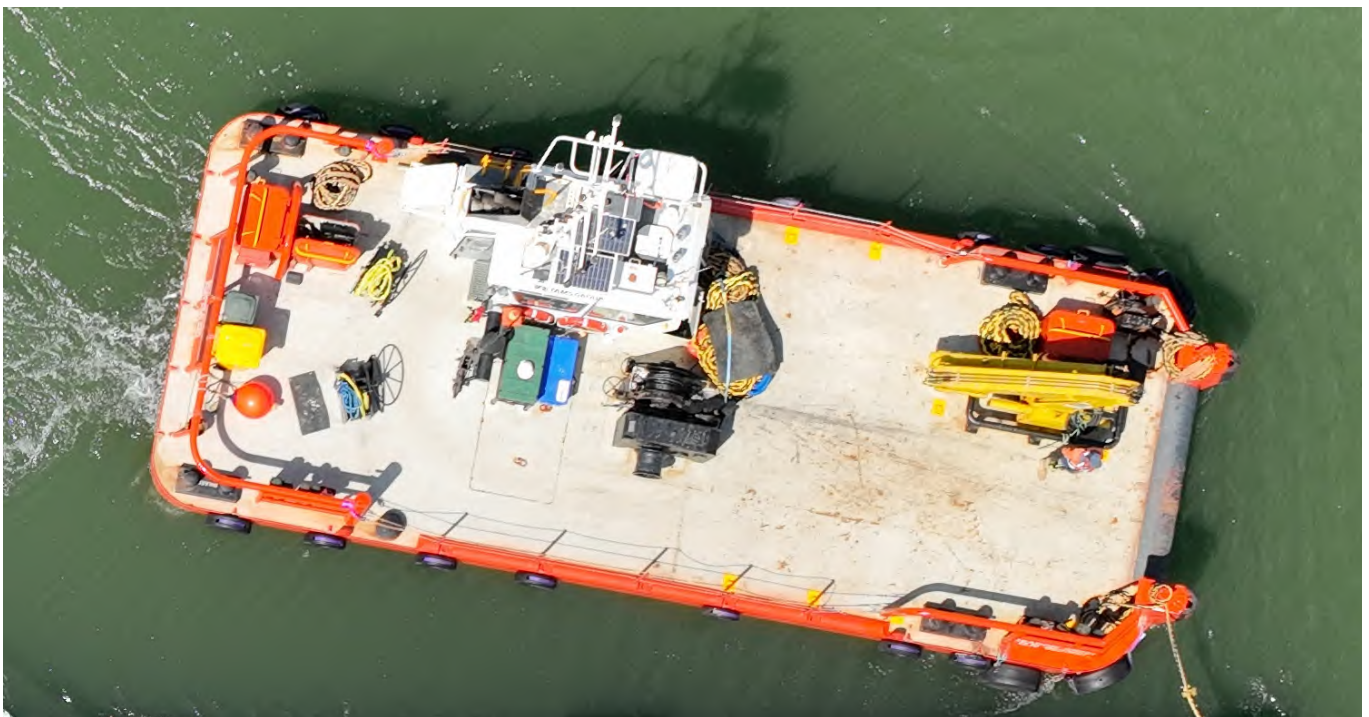
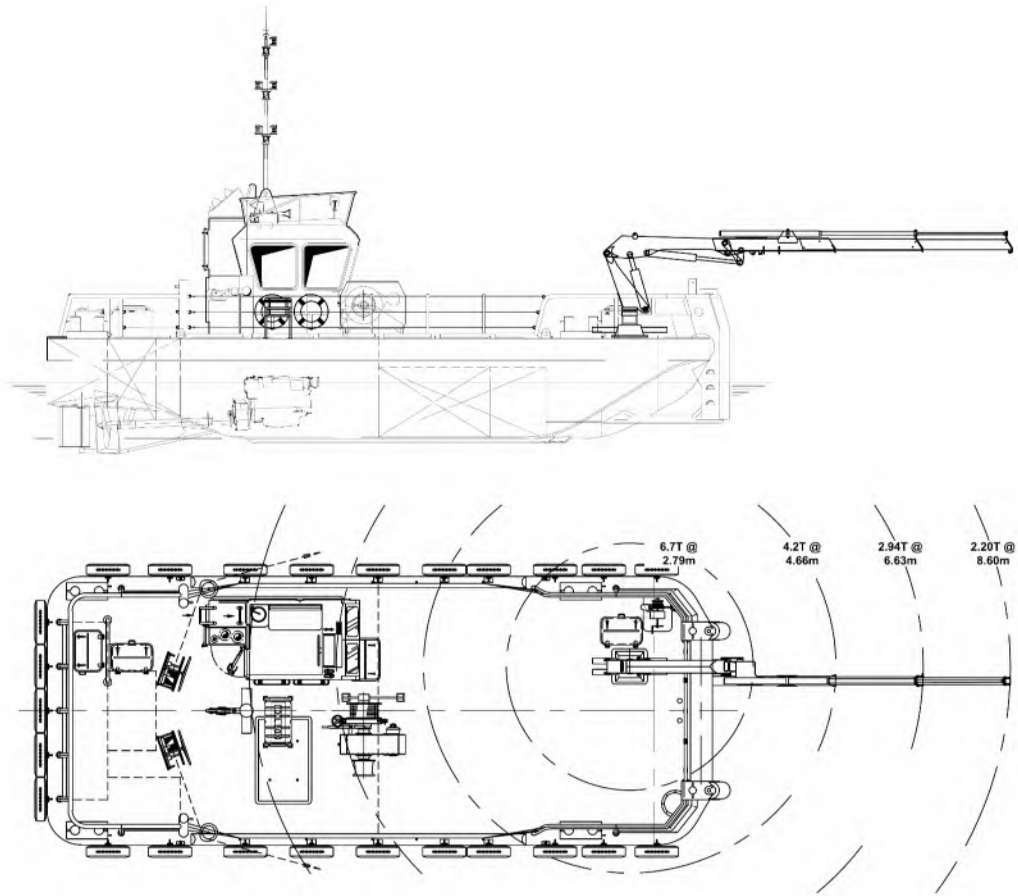
Project / dredge support vessel. Ideal for pushing barges around in smaller waterways.

# BEADON CREEK

## MULTICAT



### GENERAL ARRANGEMENT



The data on this specification sheet has been published in good faith and should be considered for general information purposes only. It does not warrant its accuracy or completeness and to the full extent allowed by law excludes liability.