



## OVERVIEW

Primary Specification		Machinery	
<b>Registry:</b>	Australia	<b>Propulsion:</b>	2 x Fixed Pitch Propellers
<b>Class:</b>	BV / 1*HULL MACH AUT-UMS	<b>Kort Nozzle:</b>	Yes
<b>Official Number/Unique Identifier:</b>	OF859619	<b>Main Engines:</b>	2 x QSK19 CME Cummins 567kW ea
<b>IMO Number:</b>	9587520	<b>Total Propulsion Power:</b>	1134kW
<b>Length (Overall):</b>	21.60m	<b>Gear Box:</b>	2 x Reinjes WAF 364L 4.48:1
<b>Breadth (Moulded):</b>	9.04m	<b>Generator:</b>	2 x Cat C4.4
<b>Depth (Moulded):</b>	3.0m	<b>Bow Thruster:</b>	N/A
<b>Design Draft:</b>	2.04m		
<b>Gross Registered Tonnage:</b>	135T	Operational Performance	
<b>Vessel Weight (lightship):</b>	198.8T	<b>Bollard Pull:</b>	23.2T
<b>Clear Deck Space:</b>	140m <sup>2</sup>	<b>Full Operating Speed:</b>	10 Knots
<b>Cargo Deadweight:</b>	65.9T	<b>Economic Operating Speed/consumption:</b>	8 Knots / 163L/Hr
<b>Deck Loading</b>	6.0T/m <sup>2</sup>	<b>Consumption at Idle:</b>	32L/Hr
<b>Accommodation:</b>	5		

The data on this specification is published in good faith and for general information purpose only. It does not warrant its accuracy or completeness and to the full extent allowed by law excludes liability.



## OVERVIEW

Tank capacities	
Fuel:	56.1m <sup>3</sup>
Fresh Water:	28.0m <sup>3</sup>
Water Ballast:	32.0m <sup>3</sup>
Lube Oil:	2.7m <sup>3</sup>
Waste Oil:	1.64m <sup>3</sup>
Sullage:	Sewage treatment plant
Grey Water:	1.64m <sup>3</sup>
Fuel Tranfer Pump:	ZW Pompen Beat S80
Bilge & Ballast Pump:	ZW Pompen S90 G30T
Fire Pump:	ZW Pompen S90 G30T

Deck Machinery	
Tow Winch:	50T Pull first layer
Anchor Handling winch	50T Pull first layer
Tugger Winch:	10T
Anchor Windlass:	40T 13.9m chain
Capstan:	N/A
Shark Jaws:	Chain 2.5"max (100T SWL) Wire 64mm max (100T)
Towing Pins:	N/A
Towing Hook:	10T Quick Release
Stern Roller:	Bow Roller
Deck Crane:	Helia HLRM 140-4S 8.18T @ 14.09m

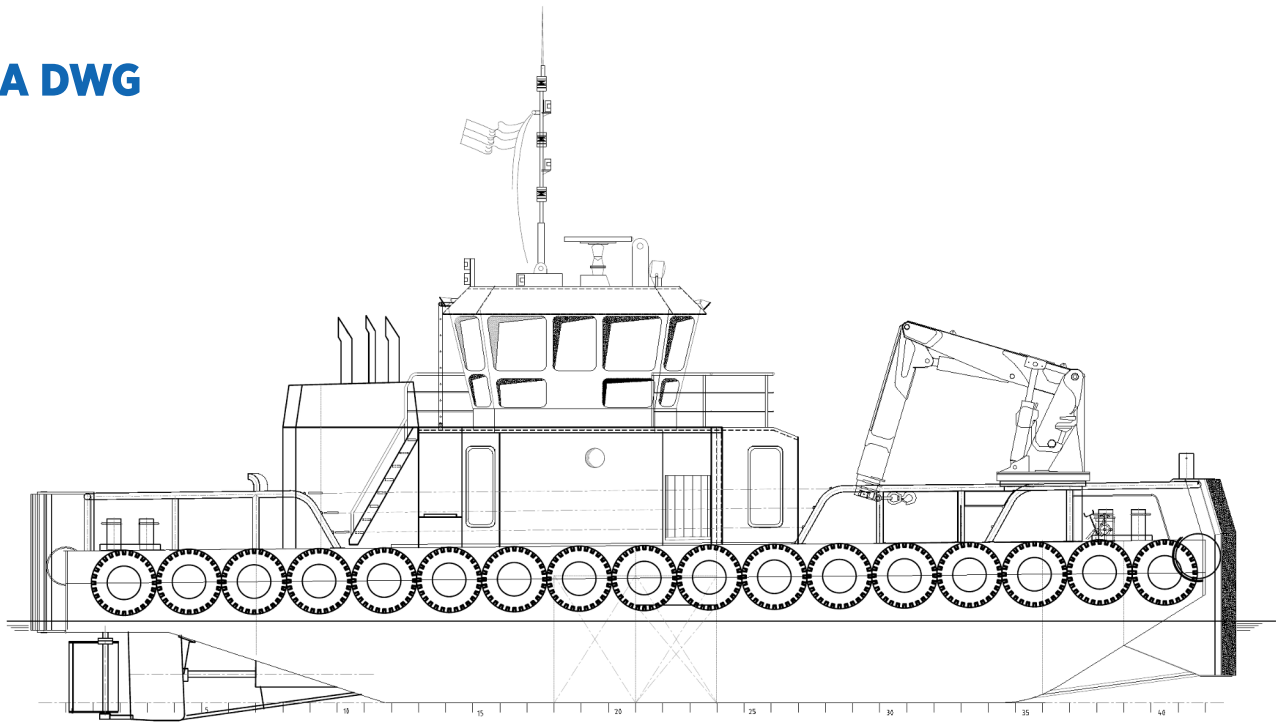
Navigational/Communications	
Radar System:	Furuno
Depth Sounder:	Furuno FCV-585
HF Radio:	GMDSS Furuno Felcom 15
VHF Radio:	2 x Sailor RT 5022 with DSC
Call Sign:	VNW6381
Compass:	1 x Cassel Plate
GPS:	2 x Furuno GP-150
Chart Plotter:	Furuno Navnet
Auto Pilot:	Sea Pilot 75
AIS:	Furuno FA-150
MMSI:	503486600



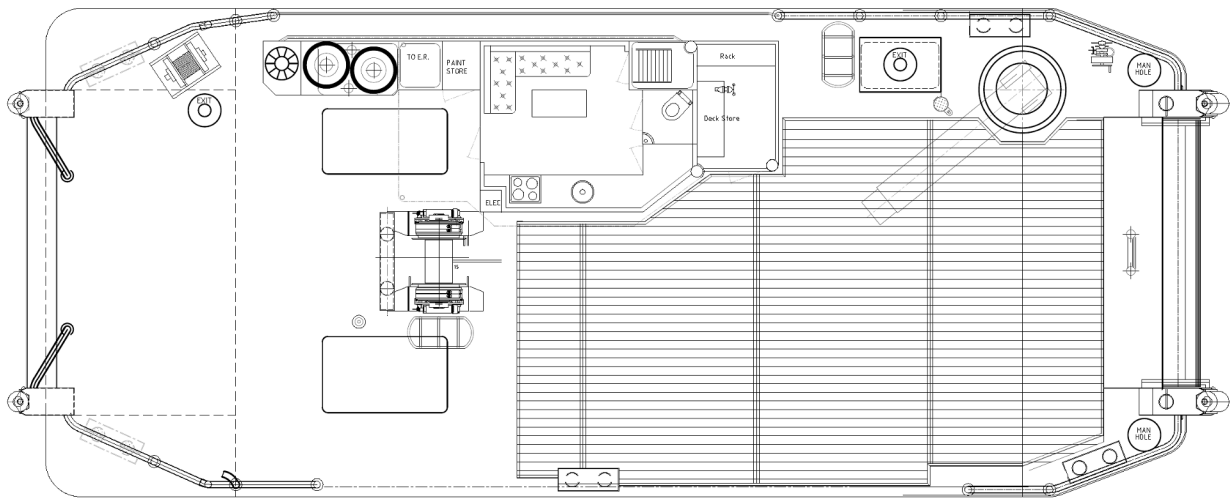
The data on this specification is published in good faith and for general information purpose only. It does not warrant its accuracy or completeness and to the full extent allowed by law excludes liability.



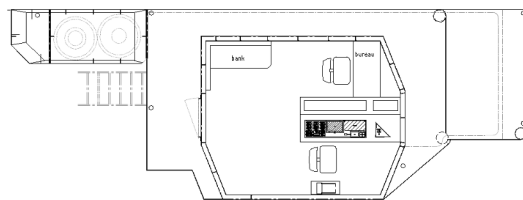
# GA DWG



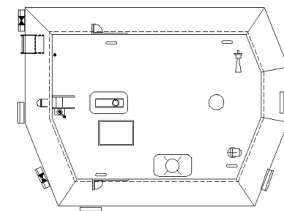
PROFILE



MAIN DECK PLAN



BRIDGE DECK



TOP DECK



The data on this specification is published in good faith and for general information purpose only. It does not warrant its accuracy or completeness and to the full extent allowed by law excludes liability.