



## OVERVIEW

Capable mid size ballastable crane / cargo barge, lends itself to constricted project sites including Swan river works.

### PRINCIPAL PARTICULARS

Length overall	36.58m	Draft lightship	0.44m
Width	12.19m	Draft max.	1.89m
Depth	2.44m	Cargo capacity	645t / 5tm <sup>2</sup> deck loading

### SURVEY

Registry	AMSA RAV	Class	DNV
Official / UVI#	460937	Category	2B 100 A5 Barge deck cargo

### OPTIONS

Four point mooring spread, Crane mats, RORO ramps, Boom cradle, Office / Ablution blocks, Piling gate, RTK GPS ready. Has stability load conditions for 120t crawler crane completing lifts including:  
 4.7t@32m over both side and stern,  
 15t@14m over both side and stern,  
 40t@7m over stern.

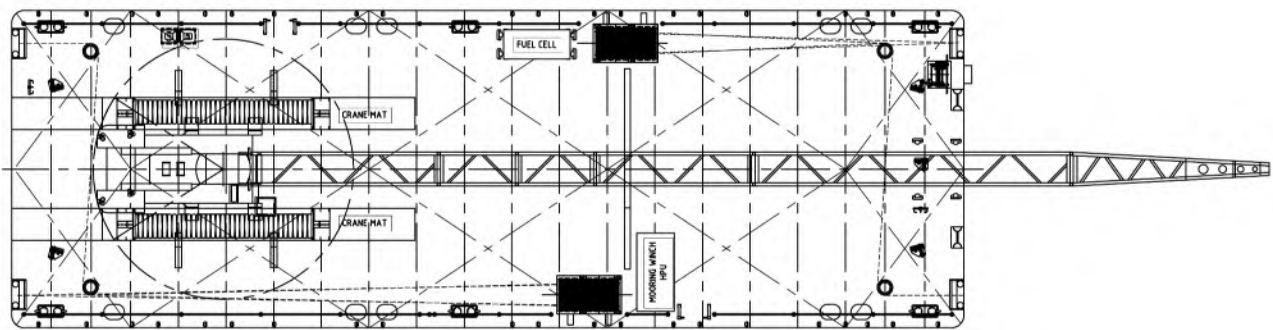
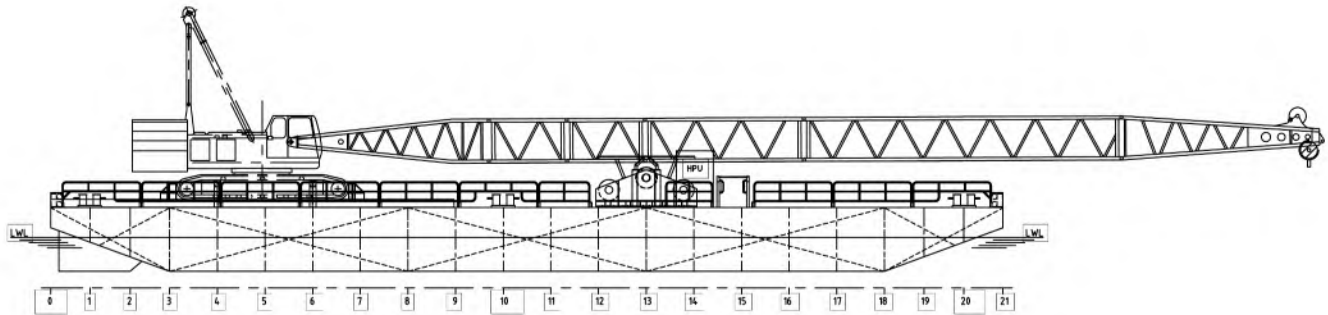


# TAMS 129

## BARGE



### GENERAL ARRANGEMENT



The data on this specification sheet has been published in good faith and should be considered for general information purposes only. It does not warrant its accuracy or completeness and to the full extent allowed by law excludes liability.