



## OVERVIEW

Versatile vessel giving comfortable, stable, dry ride due to Air rider tunnel hull design.

### PRINCIPAL PARTICULARS

<b>Length overall</b>	10.00m	<b>Propulsion</b>	2 x Yamaha 300hp
<b>Width</b>	3.34m	<b>Operational fuel burn</b>	75lt/hr@24Kn
<b>Fuel</b>	1100lt	<b>Max Speed</b>	32Kn
<b>Range</b>	250Nm ( 30% reserve)	<b>Max draft</b>	0.65m (100% tanks,12 pax)

### SURVEY

<b>Registry</b>	AMSA DCV	<b>Call Sign</b>	VJN4658
<b>Class</b>	2C	<b>Crew</b>	2
<b>Official / UVI#</b>	440942	<b>Passengers</b>	10

### OPTIONS

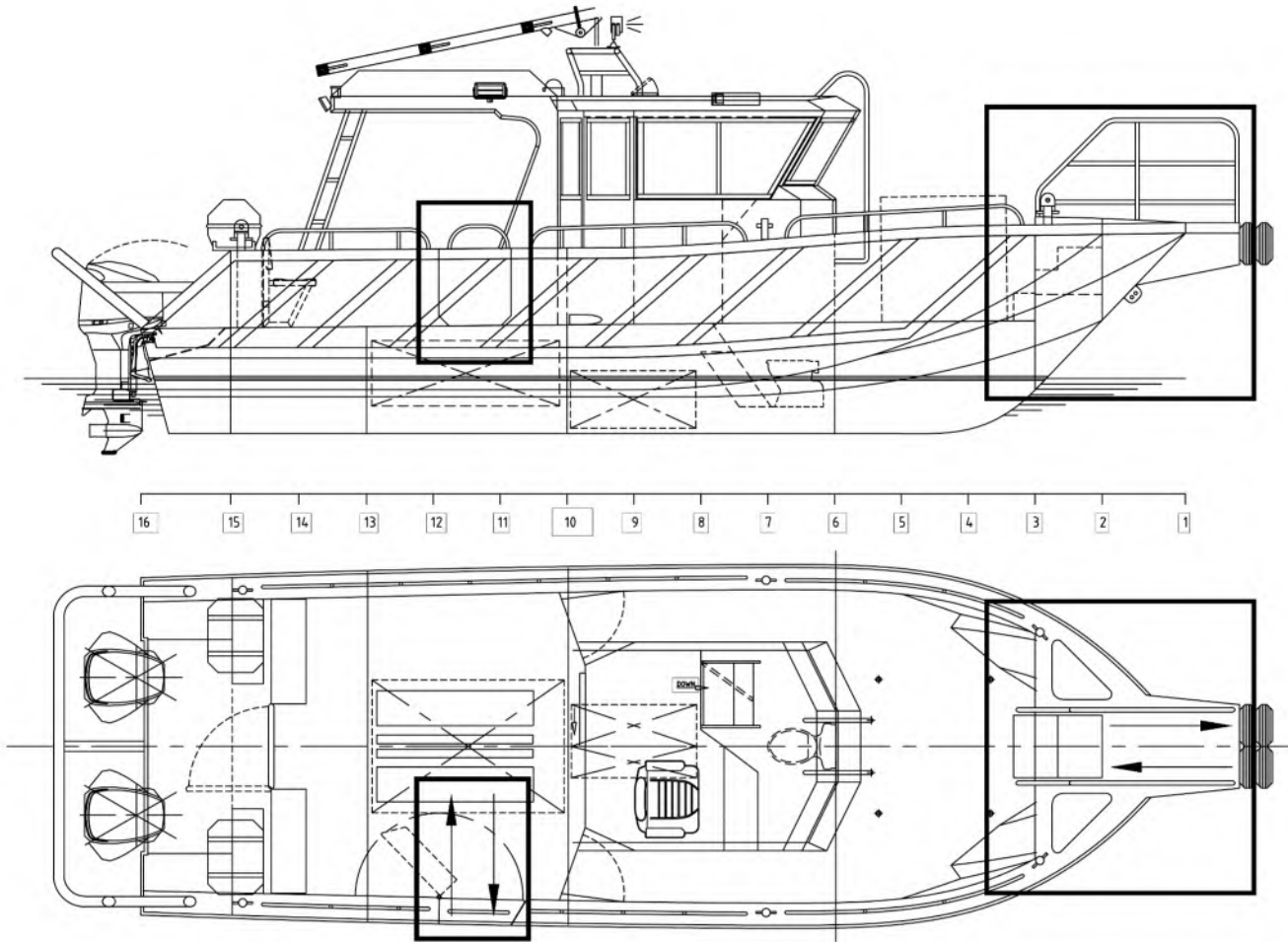
Over the side Survey pole, Multibeam survey spread, RTK GPS ready, Full set of clears, Toilet, 240v inverter. OVID compliant.

# TAMS PASSAGE

## UTILITY



### GENERAL ARRANGEMENT



The data on this specification sheet has been published in good faith and should be considered for general information purposes only. It does not warrant its accuracy or completeness and to the full extent allowed by law excludes liability.