



OVERVIEW

Primary Specification

| | |
|---|------------------|
| Registry: | AMSA |
| Class: | USL 2C |
| Official Number/Unique Identifier: | 1541 |
| Length (Overall): | 12.24m |
| Breadth (Moulded): | 4.5m |
| Depth (Moulded): | 2.0m |
| Design Draft (lightship): | 1.2m |
| Gross Registered Tonnage: | 22T |
| Vessel Weight (lightship): | 23.11T |
| Clear Deck Space: | 15m ² |
| Cargo Deadweight: | 3.3T |
| Accommodation: | 2 |

Machinery

| | |
|--------------------------------|------------------------------|
| Propulsion: | Single Fixed Pitch Propeller |
| Kort Nozzle: | Yes |
| Main Engines: | 1 x Doosan 299kW |
| Total Propulsion Power: | 299kW |
| Gear Box: | DMT 144H-C 2.09:1 |
| Generator: | 35KVA |
| Bow Thruster: | Key Power 35HP |

Operational Performance

| | |
|--|-------------------|
| Bollard Pull: | 6.0 T |
| Full Operating Speed: | 8.4 Knots |
| Economic Operating Speed/consumption: | 6.7 Knots/ 43L/Hr |
| Consumption at Idle: | 8.4L/HR |

The data on this specification is published in good faith and for general information purpose only. It does not warrant its accuracy or completeness and to the full extent allowed by law excludes liability.



OVERVIEW

| Tank capacities | |
|-----------------------|-------------------------|
| Fuel: | 5.5m ³ |
| Fresh Water: | N/A |
| Water Ballast: | N/A |
| Lube Oil: | N/A |
| Waste Oil: | N/A |
| Sullage: | 1.5m ³ |
| Grey Water: | N/A |
| Fuel Transfer Pump: | N/A |
| Bilge & Ballast Pump: | 2 x Rule 2000 |
| Fire Pump: | 1" Jabsco engine driven |
| Deck Machinery | |
| Tow Winch: | Radicon 3T |
| Tugger Winch: | N/A |
| Anchor Windlass: | Hamilton Eng 2T |
| Capstan: | Radicon 3T |
| Shark Jaws: | N/A |
| Towing Pins: | N/A |
| Towing Hook: | N/A |
| Stern Roller: | N/A |
| Deck Crane: | A-Frame 1.5T |

| Navigational/Communications | |
|-----------------------------|------------------------|
| Radar System: | N/A |
| Depth Sounder: | Koden CVS-118 |
| HF Radio: | N/A |
| VHF Radio: | 1 X Icom M304 with DSC |
| Call Sign: | N/A |
| Compass: | Daiko Keiki |
| GPS: | N/A |
| Chart Plotter: | Raymarine RC435 |
| Auto Pilot: | TMQ AP4 |
| AIS: | Sanav AIS-700 |
| MMSI: | 503528900 |

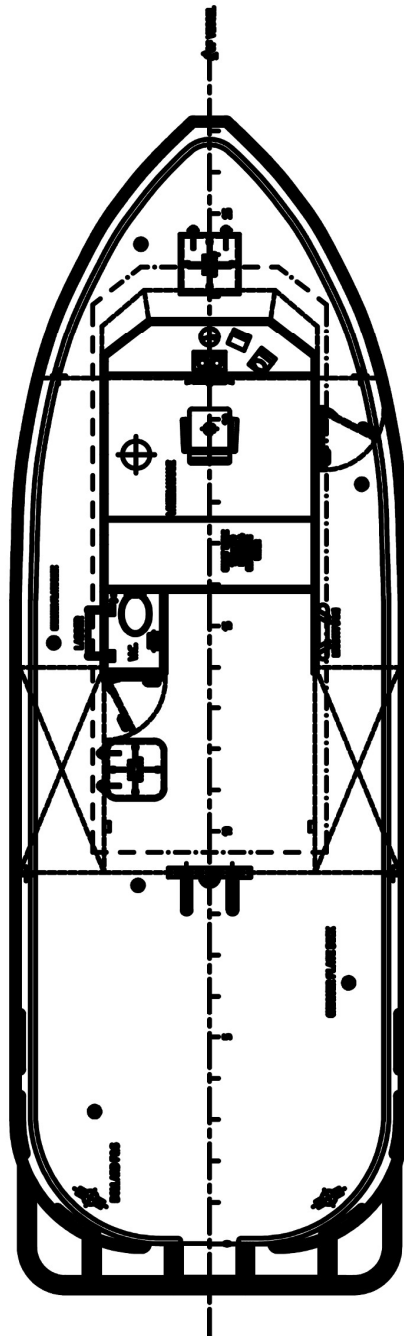
| Dive Support | |
|--------------|--|
| System: | 2 Diver Air / Enriched Air Nitrox System |
| Compressor: | 1 x 29CFM Abac Compressor |
| Tooling: | HPU & Compressor for wide variety of diver tooling |



The data on this specification is published in good faith and for general information purpose only. It does not warrant its accuracy or completeness and to the full extent allowed by law excludes liability.



GENERAL ARRANGEMENT



The data on this specification is published in good faith and for general information purpose only. It does not warrant its accuracy or completeness and to the full extent allowed by law excludes liability.