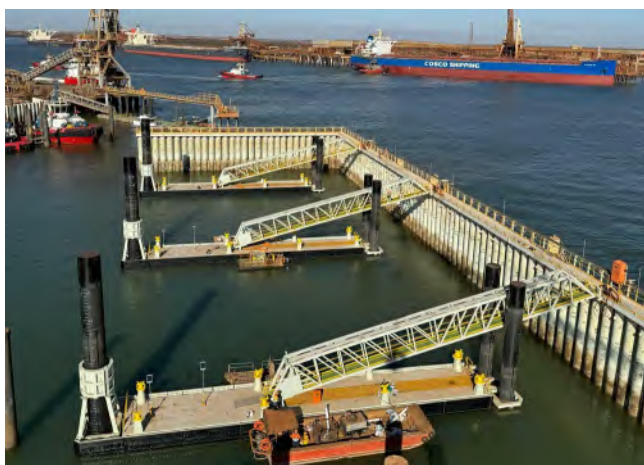


OVERVIEW

Project Name	Nelson Point Tug Haven Outer Wall
Client	Pilbara Ports Authority
Site	Nelson Point, Port Hedland WA
Duration	September 2023 - June 2024
Main Equipment	TAMS 9 Piling Barge, Westsea 11 Crane Barge, Juntan HHX 210 & 300 Hydraulic Hammers, PTC60HV Vibratory Hammer, Muticat AMS Boss, Seahorse Chuditch Tug, Daintree Punt



DETAILS

Pilbara Ports Authority contracted TAMS Group to execute a major infrastructure upgrade to the Nelson Point Tug Haven at Port Hedland WA.

Existing infrastructure deconstruction works included the removal of:

- 200m long Sheet Pile Wall
- 15no. Pontoon & Cyclone Piles
- 55no. Raking Support Piles
- 3no. Pontoons
- 3no. Gangways

To facilitate the infrastructure upgrade, TAMS supplied & installed a clutched Outer Pile Wall structure, Tug Haven Pontoons and associated elements, comprising:

- 147no. 1016mm OD x 19mm WT Clutched Piles
- Fabricated Capping Beam Walkway
- 3no. 1500mm OD x 19mm WT Pontoon piles
- 6no. 1219mm OD X 40mm WT Pontoon piles
- 3no. 120t x 30m Pontoons
- 3no. 30m Gangways
- Electrical Services
- Hydraulic Services
- 65m Recurved Seawall
- 5000m³ Maintenance Dredging