



OVERVIEW

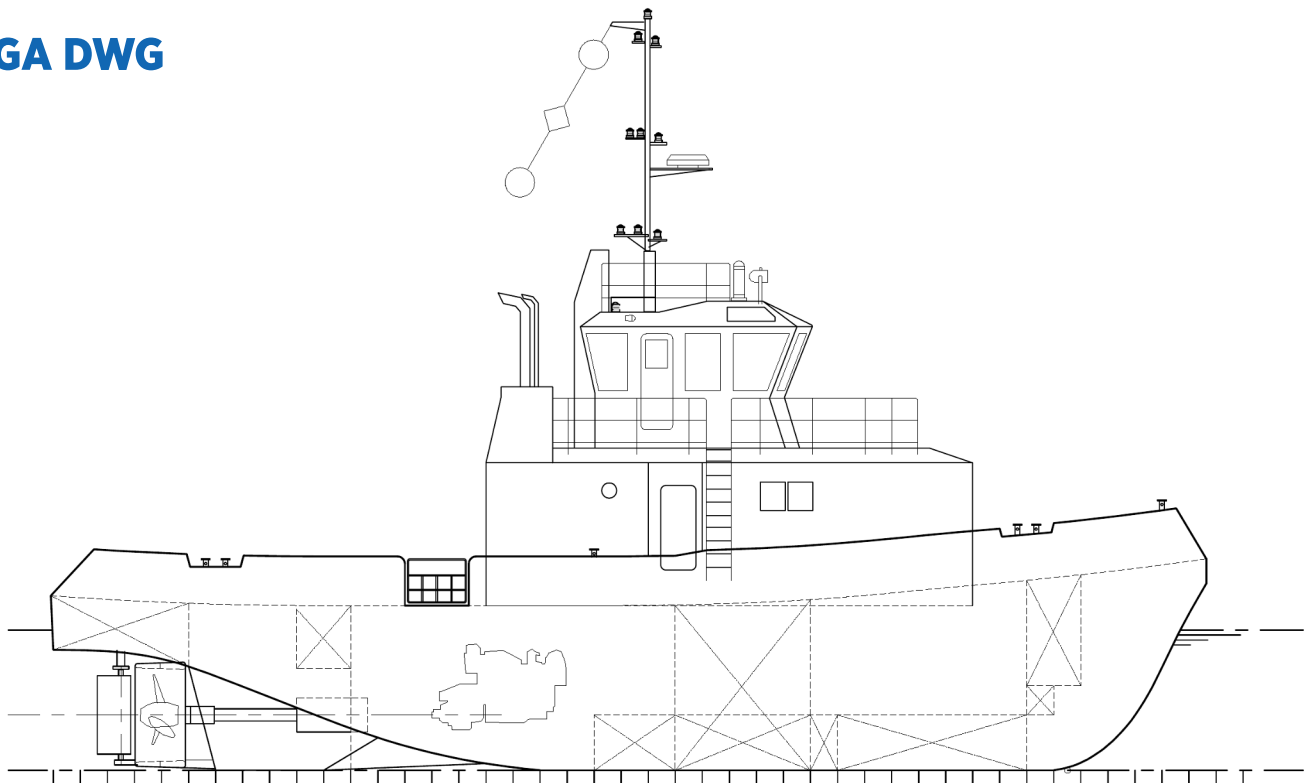
Primary Specification	
Registry:	Australia
Class:	USL 2B & 2D
Official Number/Unique Identifier:	445146
Length (Overall):	23.5m
Breadth (Moulded):	7.32m
Depth (Moulded):	3.35m
Design Draft (lightship):	2.85m
Gross Registered Tonnage:	139T
Hull Material	Steel

Machinery	
Main Engines	2 x Cat 3412C 532kW each
Gear Box:	Twin Disc MG5202DC 5.04:1
Operational Performance	
Bollard Pull	C Class
Tank Capacities	
Fuel:	85m ³
Fresh Water:	13.94m ³

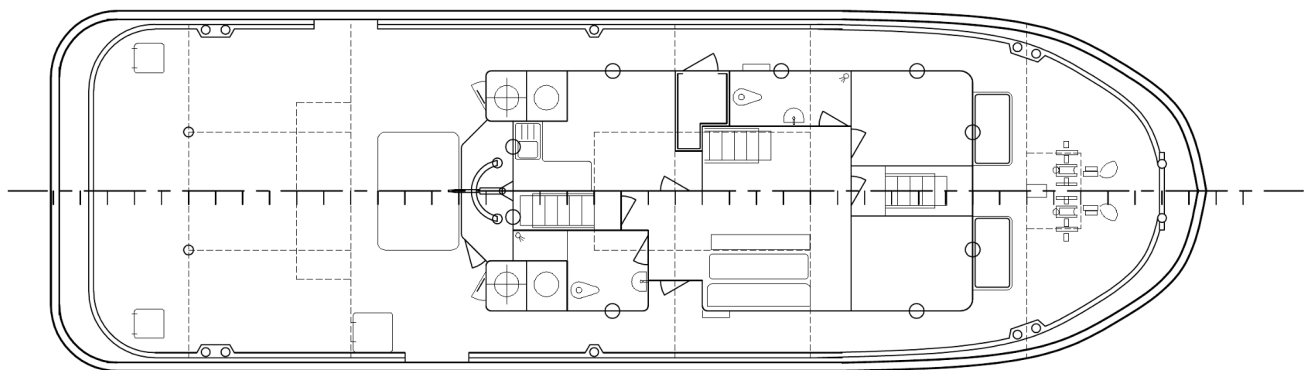
The data on this specification is published in good faith and for general information purpose only. It does not warrant its accuracy or completeness and to the full extent allowed by law excludes liability.



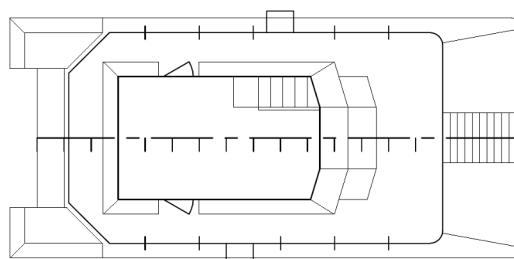
GA DWG



PROFILE



MAIN DECK



UPPER DECK



The data on this specification is published in good faith and for general information purpose only. It does not warrant its accuracy or completeness and to the full extent allowed by law excludes liability.