



## OVERVIEW

TAMS shore bases provide operational and maintenance support to our in-house, and third party vessels and associated equipment. With their strategic locations, the bases provide unique combinations of marine project support and complementary marine services along with TAMS diverse capabilities.

### Onslow Shore Base

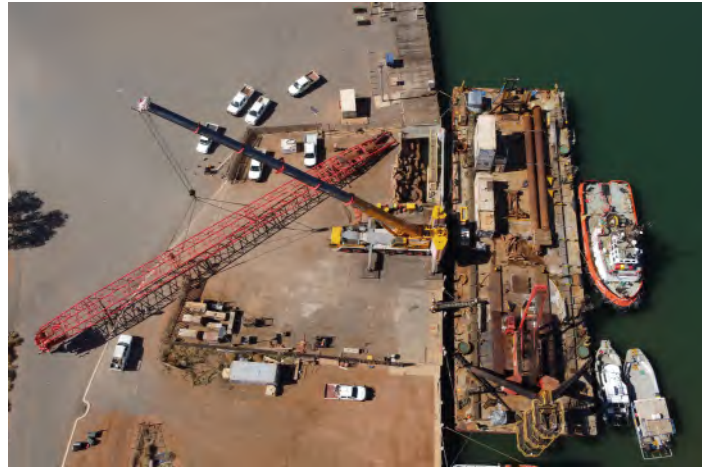
The Beadon Creek shore base is strategically located close to various offshore oil & gas and minerals export facilities. With its comprehensive capabilities, local knowledge and a team of experienced personnel, the Onslow Shore Base has been instrumental in supporting TAMS's projects in the region. Key features include:

- 1.5 Hectare laydown yard
- Logistics support - secure open storage / warehousing / project offices
- Heavy lift jetty capable of accommodating 450 Tonne Crane
- OMSB and PPA ACW operations support
- Vessel mobilisation / demobilisation
- Personnel transfer jetty
- Beadon Creek moorings, Beadon Bay moorings and Mangrove Passage Cyclone Moorings.





# ONslow SHORE BASE



*Pilot Exempt Towing and Heavy Lift Wharf Facility*



*A diverse range of Vessel Charter, Project Support, Construction, Survey, Dredging and Subsea Services Offerings*



*Onslow Shore Base yard and office facilities*

The data on this specification sheet has been published in good faith and should be considered for general information purposes only. It does not warrant its accuracy or completeness and to the full extent allowed by law excludes liability.