

PORT HEDLAND SHORE BASE



OVERVIEW

TAMS shore bases provide operational and maintenance support to our in-house, and third party vessels and associated equipment. With their strategic locations, the bases provide unique combinations of marine project support and complementary marine services along with TAMS diverse capabilities.

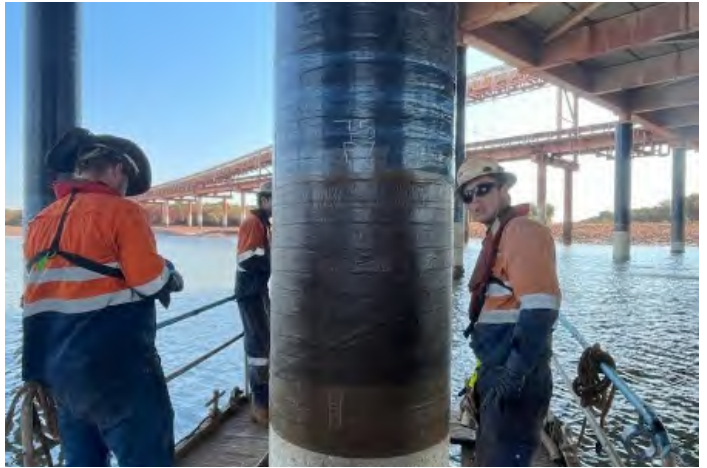
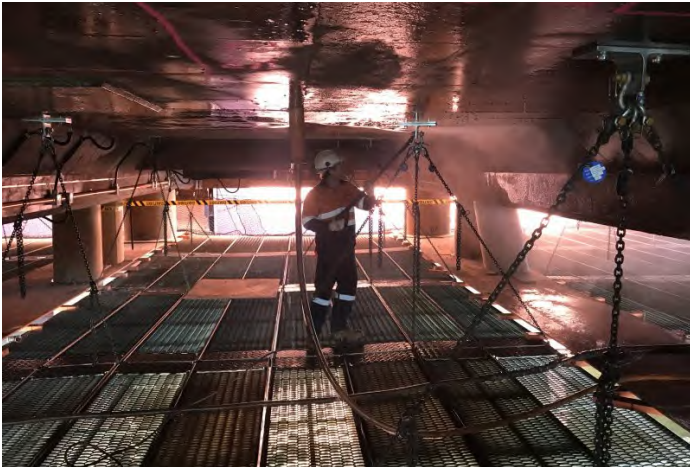
Port Hedland Shore Base

The Port Hedland shore base is ideally located on PPA land with direct access to common user berths. With its comprehensive capabilities, local knowledge and a team of experienced personnel, the Port Hedland Shore Base has been instrumental in supporting TAMS's projects in the region. Key features include:

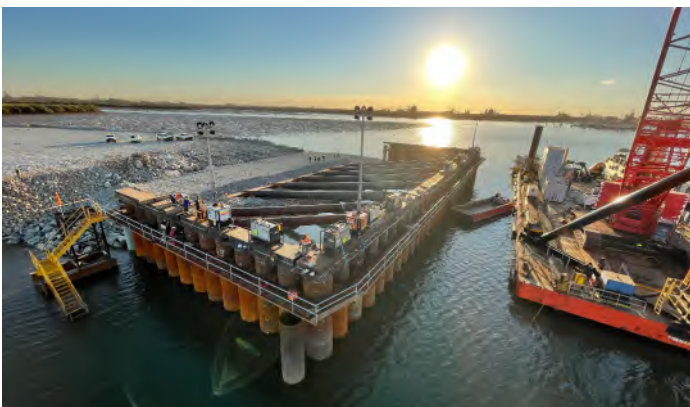
- 1.5 Hectare laydown yard
- Logistics support / storage
- Fabrication
- 650m² drive through covered workshop with overhead Gantry crane
- Pilot exempt towing
- Vessel mobilisation / demobilisation
- Extensive wharf construction/remediation capabilities including Piling and deck refurbishment



PORT HEDLAND SHORE BASE



Wharf remediation



A broad portfolio of wharf construction projects



The data on this specification sheet has been published in good faith and should be considered for general information purposes only. It does not warrant its accuracy or completeness and to the full extent allowed by law excludes liability.